

# The Vertical Solutions Company

## Rail Bracket Inserts

INW04 - Drywall or Steel Construction

INM05 - Masonry

### Drywall / Wood Construction

1. Find the installation locations per the attached diagram and the local Construction Superintendent.
2. Verify that headers are installed in the insert locations.
3. Drill through the header and attach the insert with three (3) 5/8" bolts with flat and lock washers on the rear of the header. (Lag bolts are not an accepted means for attaching these inserts.)
4. Attach and finish 2 layers of 5/8" drywall being sure that the insert is grouted completely.

### Steel Construction

1. Find the installation locations per the attached diagram and the local Construction Superintendent.
2. Stitch weld the insert to the structure in at least five (5) equally spaced locations both top and bottom.

### Masonry Block Construction

1. Find the installation locations per the attached diagram and the local Construction Superintendent.
2. Make a 1 1/4" notch in the top edge of the block to fit the insert.
3. Install the insert flush with the face of the block and slush fill the blocks around the insert legs.
4. Lay the next course of block and slush fill that as well.
5. Grout solid all around the insert.

Attach the rail brackets to the inserts using standard 5/8" bolts, washers and nuts; no special insert washers are required.

These inserts are to be used as required by local codes and regulations. In straight line pull-out tests the minimum failure force is 5,800 pounds, well in excess of most code requirements. Check with local authorities to ensure code compliance.

For more information contact:

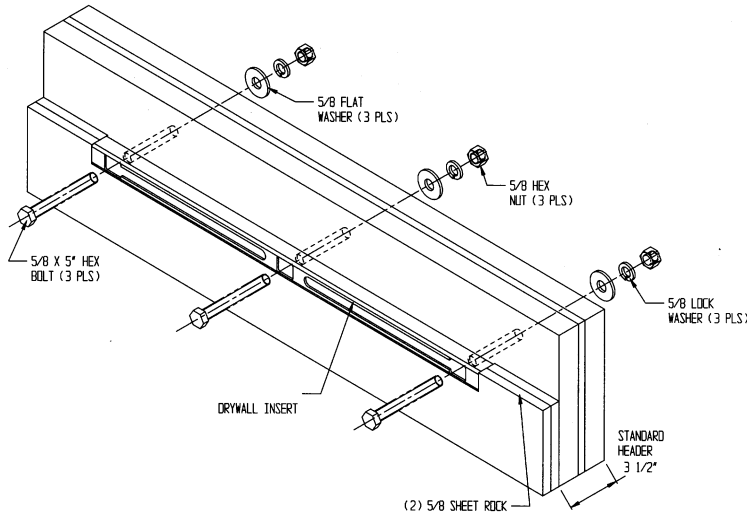


the **VERTICAL SOLUTIONS** company

1-877-655-8164  
sales@verticalsolutionscompany.com

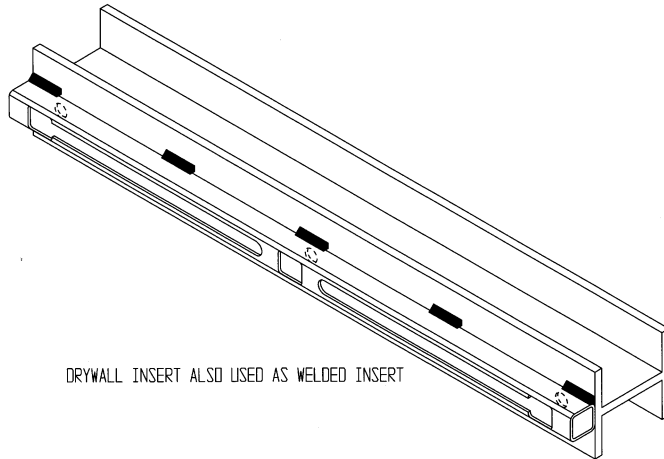
Test Bolt Position	Minimum Failure Force
Inside End of Slot	7220 lbs.
Outside End of Slot	6690 lbs.
Center of Slot	5800 lbs.

# Insert Installation Detail



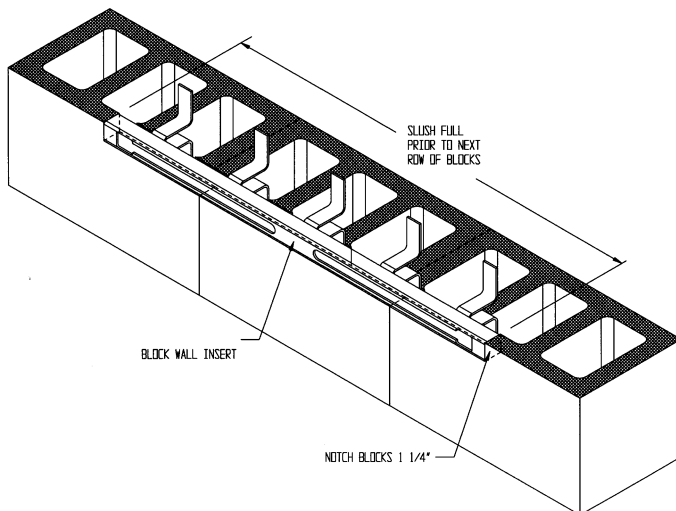
## Drywall Construction

Inserts are 1-1/4" square for use with 2 layers of 5/8" drywall



## Steel Construction

Same insert used in drywall applications but stitch welded to steel support



## Block Construction

Inserts are 1-1/4" square. Mount face of insert flush with wall and grout solid all around

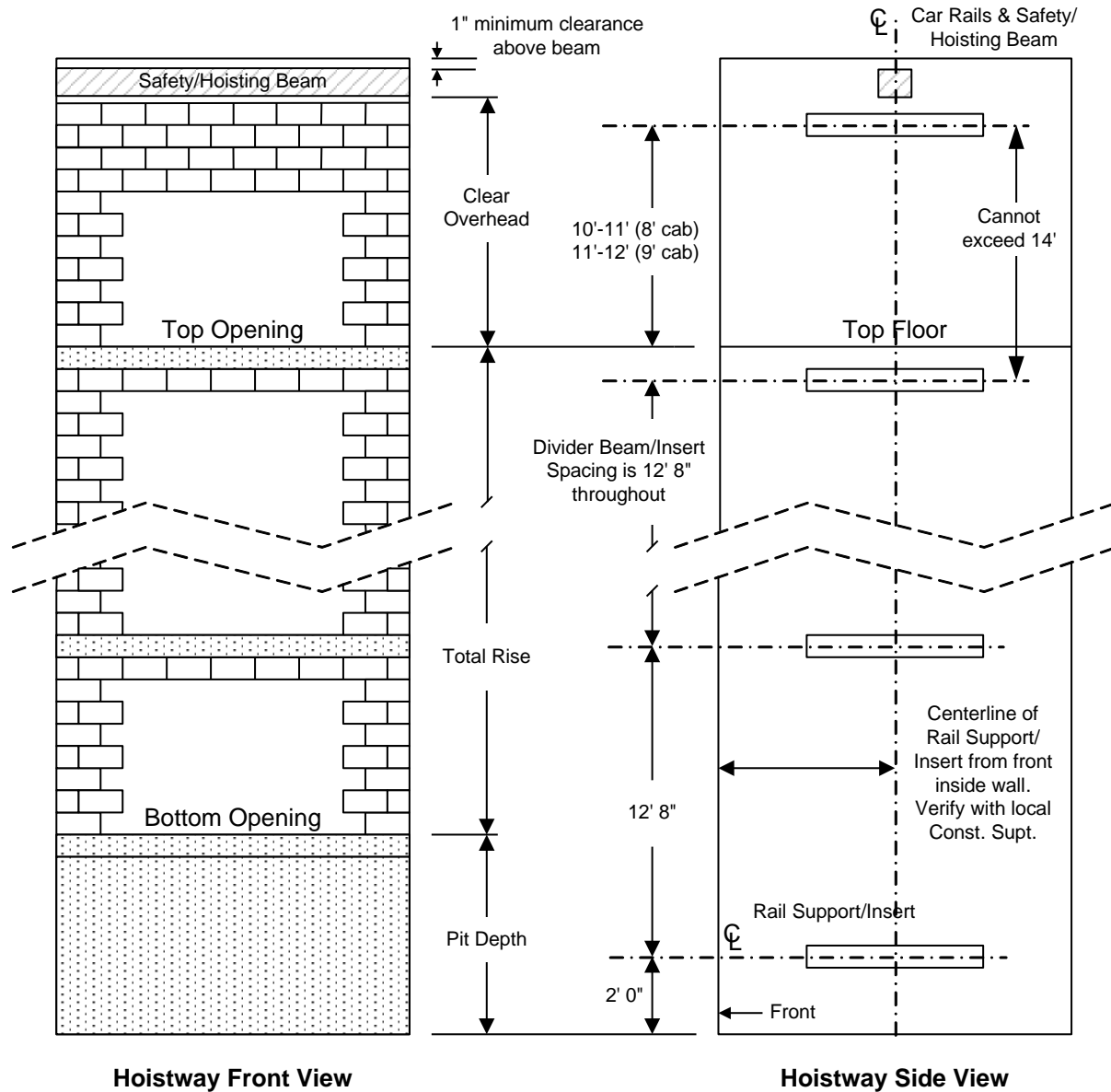


the **VERTICAL SOLUTIONS** company

1-877-655-8164

[sales@verticalsolutionscompany.com](mailto:sales@verticalsolutionscompany.com)

## Insert/Rail Fastening Locations



**Divider Beam/Insert spacing shown above is typical. Verify with the local Construction Superintendent that this spacing is correct.**



the **VERTICAL SOLUTIONS** company

1-877-655-8164

sales@verticalsolutionscompany.com